

Llanbedr Fibre Community Partnership

19.01.2024



openreach

We make sure that Wales matters, so we can deliver the connections that matter to Wales

In Wales, we are a team of **2,300** people as part of our 37k team across the UK

Connecting **1.6m** homes and businesses in Wales across our whole network

We've already passed **>810k** premises with full fibre in Wales

We're committed to a balanced approach, so will build commercially to **25%** of rural properties.



Of those properties, we have already delivered to more than **30%**

Including on Yr Wyddfa, making it the highest fibre in the country at **1,085m**

Our network will create many opportunities for people

Nationwide rollout of Full Fibre could increase productivity in Wales by **£5.7k** per household

And widespread full fibre will greatly benefit Wales **c.£1.6bn** boost to Welsh productivity by 2026 powered by nationwide rollout of Full Fibre

Enabling changes in the way we work, helping **17,423** More people able to enter the workforce in Wales, including parents, carers and older workers, through greater flexibility.



Current FTTP coverage

- ⚙ Wales Full Fibre national coverage – **59.68%**
- ⚙ Openreach Full Fibre coverage in Wales – **50.62%**

Gwynedd Superfast (>24 Mbps)

- ⚙ Wales superfast coverage – 97.20%
- ⚙ Gwynedd superfast coverage – 95.75%

Gwynedd FTTP coverage

Using Think Broadband as a source we can see that the majority of FTTP in Gwynedd is provided by Openreach

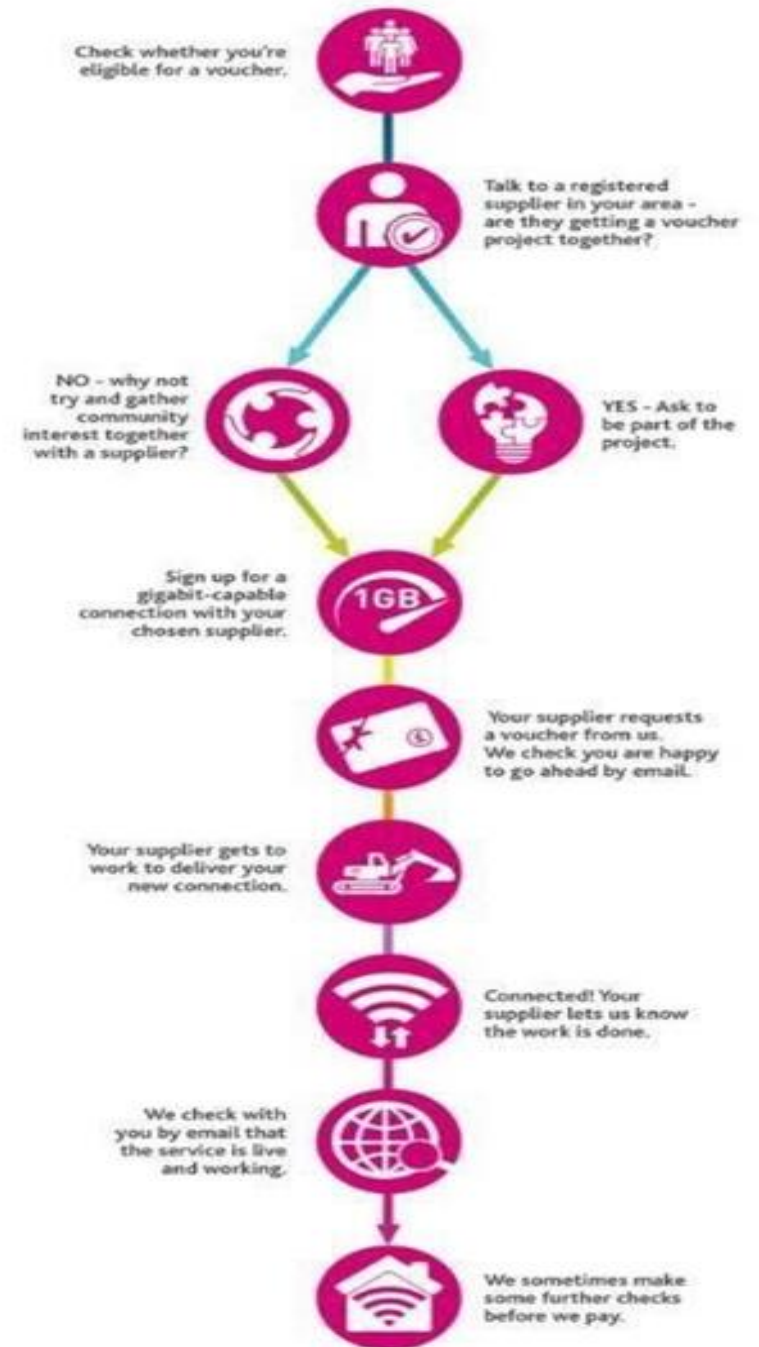
- ⚙ Gwynedd Full Fibre coverage – 49.10%
- ⚙ Openreach Full Fibre in Gwynedd – 48.94%
- ⚙ Openreach Full Fibre **Llanbedr** – 28.8%

With further builds in the area, these percentages will increase as exchange build progresses.

The UKGV scheme in a nutshell

- The [UK Gigabit Voucher scheme](#) allows communities to use free Government funding to improve their broadband connection.
- The UK Gigabit Voucher scheme means every eligible rural home and business can **get a voucher worth up to £4,500** to improve broadband in their local area.
- In order to qualify for a voucher grant, each voucher beneficiary must be prepared to order a new Full Fibre (Fibre to the Premise) broadband connection which meets the scheme rules, **within 2 months** of it being available.
- **The new connection must double their existing broadband speed if their speed is less than 50Mbps, or be at least 100Mbps if the current speed is faster than 50Mbps, this is to demonstrate that there has been a step change in the broadband speeds delivered to you.**
- They must order a FTTP/FTTH product, an FTTC fibre broadband product is not eligible.
- Openreach will build an open network. If you are contract with a service provider, it is worth discussing options to upgrade once service is available to you, or you can consider an alternative supplier if they sell in your area. Prices will vary between providers, and there may be a slight price increase, but you can check price comparison websites for a list of potential suppliers. <https://www.openreach.com/fibre-broadband/fttp-providers>
- The contract for service entered into with the chosen supplier must be for a minimum of 12 months, with no free periods

The image to the right depicts the Government's step by step process to activate the voucher. Further information regarding the terms and condition and on how the scheme works and the can be found at www.gigabitvoucher.culture.gov.uk

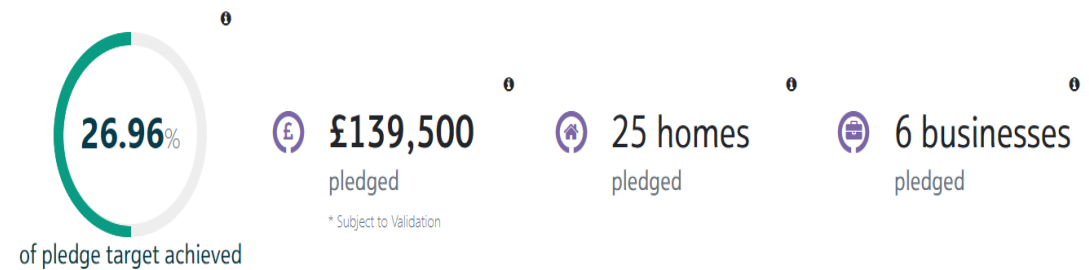


Llanbedr Pledges by Postcode – Eligible prems only

Postcode	Total Prems	Pledged Yes	Pledged No
LL452L	169	122	111
LL452H	93	90	83
LL452P	87	72	69
LL452N	40	69	64
LL452D	7	33	30
LL452A	2	6	6
LL442R	2	5	3

Total Prems	Pledged Yes	Pledged No
397	31	366

Llanbedr Pledge Target
115



Llanbedr FCP Scheme & Procurement

- ❑ 445 premises in scheme build plan with 397 eligible to pledge their voucher. 31 pledges so far and 115 required for scale upgrade to take place. 26.96% of target and 84 further pledges required to reach 100%. Full scale build would transform Llanbedr from 28.8% full fibre coverage to over 90% full fibre coverage. This is an exciting opportunity for the area to join the 34,000+ customers across Gwynedd that are already benefiting from full fibre.
- ❑ There is a national procurement in place currently across the UK called project gigabit which is delaying fibre build in most rural areas of Wales and the UK at the moment. A procurement is like a big auction. The government are allowing all fibre builders like Openreach (and its competitors) to bid on build contracts across the UK. This process is a slow one and is unlikely to be resolved until later this year.
- ❑ Llanbedr has been released temporarily from procurement to complete build ahead of any contract agreement in the form of a Fibre Community Partnership or FCP. This is where government funding can be secured in the form of free vouchers which each eligible home is able to apply for so the scheme can go ahead.
- ❑ The voucher process is on hold across most of Wales and the UK during this procurement period because the homes may get picked up in the gigabit contract. This means that Llanbedr is in a unique position for full fibre build to take place ahead of many rural locations in Wales outside our commercial programme. For this to happen though we require more of the community to pledge for a free UK government broadband voucher online so we can upgrade the network to as much of the exchange area as possible.
- ❑ Full Fibre technology provides more reliable, resilient and future-proof connectivity; meaning fewer faults; more predictable, consistent speeds and enough capacity to easily meet growing data demands. It's also future-proof, which means it will serve generations to come and won't need to be upgraded for decades.